



In this issue...

- Page 1 – President's Corner
 Page 2 – Board of Directors
 & Committee Chairs
 Page 3 – Branch News
 Page 9 – National Meeting
 Page 11 – National News
 Page 16 – Board Meeting
 Minutes
 Page 19 – Membership Form
 Page 22 – Newsletter Information
 Page 23 – Award Nomination
 Forms

President's
Corner

Emily Kaalberg
Iowa Branch President 2021

Halfway through the year already! We're looking towards the fall meeting and reflecting on past meetings.

The first Iowa AALAS event I attended was the 2016 fall meeting at Lake McBride in Solon. Beautiful scenery, great food, and amazing speakers. I wasn't a member of Iowa AALAS, or National AALAS for that matter, but I can recall thinking this organization seems like the kind of community I was seeking. During the lunch break I watched as vendors, speakers, and attendees mingled. Regardless of background (academic, research, industry, etc.) everyone was welcome.

This year the Board is planning the fall meeting in the Ames/Des Moines area. If anyone has suggestions for speakers/vendors, please pass the information along to the Board. We could use all the help we can get this year.

Also, be thinking about who you'd like to nominate for several awards this year (ALAT, LAT, LATG, or Veterinary Technician). Our community of professionals has taken this year in stride, and everyone deserves a pat on the back and a nice reward.

Can't wait to see everyone again and get to catch up on what a crazy year this has been.

Emily Kaalberg
 Iowa Branch President 2021



Upcoming Events...

AALAS NATIONAL
ELECTION
6/1/2021-6/30/2021

60TH ANNUAL CALAS/
ACSA ANNUAL
SYMPOSIUM
6/4, 6/7, 6/11, 6/18, 2021
Virtual
[Click for More Information](#)

THREE I'S, BIOSECURITY
AND RESEARCH
INTEGRITY
CONFERENCE
6/14-6/17, 2021
10 AM TO 4 PM
Virtual
www.msmr.org

WEBINAR: "THE VALUE
OF ENRICHMENT"
6/22/2021
10 AM TO 2 PM
<https://bit.ly/2T8O1FK>

72nd AALAS NATIONAL
MEETING
10/17/2021-10/21/2021
Kansas City, MO



More events can be
found at:
[https://community.aalas.org
/calendar](https://community.aalas.org/calendar)



2021 Board of Directors & Committee Chairs



Emily Kaalberg
**President & Social
Media Chair**
U of I; 4156C MERF
375 Newton Rd
Iowa City, IA 52242
emily-kaalberg@uiowa.edu



Dr. Brianne Ball
**Past-President &
Elections Chair**
U of I; L350 PBDB
169 Newton RD
Iowa City, IA 52246



Dr. Becky Klimesh
**President-Elect
& Newsletter Chair**
Zoetis
2000 Rockford RD
Charles City, IA 50616
becky.klimesh@zoetis.com



Dallas Huddleson
**Treasurer &
Membership Chair**
Elanco
800 Fifth St NW
Fort Dodge, IA 50501
huddleson_dallas_w@elanco.com



Shannon Schrader
Secretary
Zoetis
2000 Rockford RD
Charles City, IA 50616
shannon.schrader@zoetis.com



Rebecca Morrison
TBR
U of I; L350 PBDB
169 Newton Rd
Iowa City, IA 52246
rebecca-morrison@uiowa.edu



**Dr. Maria Martino-
Cardona**
Board Member
U of I; L350 PBDB
169 Newton RD
Iowa City, IA 52246
maria-martino-cardona@uiowa.edu



Mary Haun
Board Member
U of I; L350 PBDB
169 Newton RD
Iowa City, IA 52246
mary-haun@uiowa.edu



Dr. Mary Sauer
**Board Member &
Program Chair**
11 Kildee
806 Stange Rd
Ames, IA 50011-1178
msauer@iastate.edu



**Dr. Amanda Ahrens-
Kress**
Board Member
1425 Vet Med
1800 Christensen Dr
Ames, IA 50011-1134
ahrensap@iastate.edu



Jeff Crutcher
**Public Relations
Chair**
Elanco
800 Fifth ST NW
Iowa City, IA 52246
crutcher_jeff_a@elanco.com



Dr. Emily Petersen
Awards Chair
U of I; BSRF 1040
2292 Old Farmstead RD
Coralville, IA 52241
emily-petersen@uiowa.edu



Dean Isaacson
**Financial Review
Chair**
1429 Vet Med
Iowa State University
Ames, IA 50011
isaacson@iastate.edu

**OPEN
Nominations**

Branch News

2021 Membership Dues Notification

At the December 2020 Board of Directors Meeting, the Branch leadership/BOD voted to allow “rollover” of 2020 dues to 2021 membership. What does this mean for you?

As a 2020 Member of the Iowa Branch of AALAS, we ask that you still complete the renewal application paperwork to become a 2021 Branch Member, so that we have accurate numbers and records of both state and national membership. However, the regular membership dues for 2021 will be an optional donation rather than required dues. We will welcome your voluntary donation to the organization to assist in the expenses of conducting business and setting up future events (hopefully an in-person meeting for Fall 2021, if public health guidance and safety allows), but we are allowing 2020 dues to be applied forward to 2021 membership due to the limited activities and events held in 2020.

With your 2021 branch membership application, please indicate whether you will be electing for waived dues (no fee associated) or would still elect to pay as a voluntary donation. We appreciate any donations made, especially for institutional memberships who have already budgeted for this expense, but are happy to provide dues-free “rollover” membership for any 2020 member who wishes to choose that option for 2021.

Thanks for your membership and we look forward to some great opportunities in the year ahead!



I'm looking to start (or join) an ACLAM board's study group (planning to take boards in 2022). If anyone would be interested to join in, send an email, ahrensap@iastate.edu. We can find a time that works best. I'm planning on this being virtual, but we can change depending on location of everyone interested.

Amanda P. Ahrens Kress, DVM

FOLLOW IOWA BRANCH AALAS



@iowaaalas



@Aalaslowa



@IOWAAALAS



Heard it Here First: How Iowa Became a Leader in Cochlear Implants | University of Iowa

One day when Tim Brandau (07BSE) was a toddler, he bolted from the fenced-in yard and into the cornfields on his family's farm near Osage, Iowa. It was midsummer, and the crops already stretched high above the boy's head. He felt the thick cornstalks brush against his arms. Smelled the earthy air.

magazine.foriowa.org





fast tracks: quick insights in animal health

Fast Tracks: Quick Insights in Animal Health

Details

Free to register
Virtual and on demand

Available beginning
March 29, 2021

Join us in March to take the “fast track” towards protecting the health and security of your most crucial research asset - animal models.

“**Quick Insights in Animal Health**” features several short, on-demand presentations (no more than 15 minutes) across six different tracks - all designed to help you learn the crucial information you need to preserve the integrity of your model colonies.

Explore six educational tracks including **Health and Environmental Monitoring** where you can learn more about the implementation of modern health monitoring strategies for screening infectious agents.

Additional topics to be discussed include:

- Animal Welfare
- Emergency Preparedness and Biosecurity
- The Microbiome
- Monitoring the Digital Vivarium
- Emerging Hot Topics

To learn more and register, visit:

www.criver.com/education-training/ev-reg-rm-fast-tracks-quick-insights-animal-health-spring-2021



With over 40 years in the medical research industry, **TOPAZ TECHNOLOGIES** is the established leader in delivering software-based compliance and operations solutions to universities, government agencies, pharmaceutical companies, and medical facilities.

THE COMPLETE SOFTWARE SUITE

TOPAZ Elements provides end-to-end solutions for Animal Breeding, Animal Census, Protocols, Animal Ordering, Billing, and Veterinary Management.

#1 RATED CUSTOMER SERVICE

Speak to a live, experienced technician in the USA every time you call for support.



TOPAZ | Technologies

topazti.com | 800.250.9090 | sales@topazti.com



Quality Bedding & Enrichment With More Options and Solutions



Cellu-nest™

Premium cellulose bedding option that is soft, clean, and comfortable. Allows for natural burrowing and nesting behaviors, without having to add any additional nesting or enrichment material.



ALPHA-dri®+PLUS

Composed of ALPHA-dri® and twisted multi-layered paper that is cut into short mini-rolls. Once in the cage, rodents unfurl and manipulate the mini-rolls into fluffy nests.



Shepherd Shack®

Shepherd Shack® structures provide an activity center for mice to climb on, chew and shred to build a nest. They form an excellent foundation for nest building when combined with Enviro-dri® nesting material.



Enviro-dri®

In a recent study Enviro-dri® encouraged mice to build the highest quality nests. Just a handful of Enviro-dri® added to your standard bedding material is all your rodents need to build a quality dome-shaped nest.

For information, prices or samples of our enrichment products or other specialty products visit our website, www.ssponline.com and locate your nearest Shepherd distributor, or call toll-free 1-800-382-5001.

Terry Burns-Heffner
Global Director of Business Development
Cell: (301) 452-7161
tbheffner@ssponline.com



SHEPHERD | SPECIALTY PAPERS

 tick@lab

A NEW DAY

Animal research and compliance software. Reimagined.

With a brand new User Interface tick@lab leads you into the future of animal and compliance management software

www.a-tune.com

a:tune
make IT simple



(512) 243 8539
sales@a-tune.com

They deserve Nestlets.

Ancare
Better products. Better science.
516.781.0755 www.ancare.com

 **Nestlets**TM



72nd AALAS NATIONAL MEETING KANSAS CITY, MO OCTOBER 17 – 21, 2021



Calling All Residents

The Committee for Laboratory Animal Training and Research (CLATR) sponsors a resident platform session at the National Meeting. If you are a lab animal resident and plan on attending the Kansas City meeting, please consider submitting a platform session abstract for consideration. Be sure to choose the "laboratory investigations" category and affirmatively answer the question about resident status. New this year is a competition where the best presentation presenter will be recognized and awarded a prize. For information on submitting an abstract, view the [call for abstracts](#). Complete your submission [here](#).



public about the essential role of animals in research and education. To donate, click [here](#).

Emergent Leadership Forum Registration Open

Registration for the Emergent Leadership Forum is now open! The Emergent Leadership Forum will be held on Sunday, October 17 at the AALAS National Meeting in Kansas City. Attendees will get an overview of

association structure and governance including legal policies, tips on how to function as a board or committee member, and guidance in dealing with the media and public relations. It is open to branch representatives and other potential leaders at no cost.

Branches will be given priority to reserve seats for one attendee, and these registrations must be received by July 1 to guarantee a seat. Interested candidates representing branch leadership should contact their branch president to be nominated. Registration will open to the general membership after July 1. Please register now if you plan to attend.

I've attached the registration form. Please email your completed form to ELF@aalas.org. If you have any questions, please feel free to contact me.

Thank you,

Mary Kathryn Billings, MBA, MAc, CAE
Strategic Initiatives Manager
AALAS
mary.billings@aalas.org

Support the Technician Fun Fair

Exhibiting companies are invited to participate in the 2021 AALAS Technician Fun Fair from Monday, October 18-Friday, October 22. Participation options include submitting questions for the exam and donating prizes for the winners. The exam will be a virtual exam which means virtual exhibitors can also participate. For more details and to sign up, download, and complete the [Tech Fun Fair form](#).



Donate to the AALAS Foundation Silent & Live Auction

It is time to donate to the AALAS Foundation's annual auction. The Silent and Live Auction supports the AALAS Foundation's efforts to educate the



2021 ELF
registration form.pdf



72nd AALAS NATIONAL MEETING KANSAS CITY, MO OCTOBER 17 – 21, 2021



Lunch & Learn

Are you a technician and attending the National Meeting in Kansas City? If so, here is a great opportunity for you. Hosted by CTAD and sponsored by PMI LabDiet, the Lunch and Learn is on Monday, October 18, from 12:30 p.m.– 2:00 p.m. This is an excellent way to enjoy a complimentary lunch and hear educational talks on lab animal science. Seats are limited. Reservations will be accepted after you have registered for the National Meeting. Meeting registration will open in July. Questions? Contact [Nancy Dorcy](#).

More Opportunities to Make the Most of KC

Visit our [Special Events](#) page to learn more about other options to make the most of the Kansas City meeting. Review information on the Career Center as well as the Orientation Session.

Be Aware: Housing Scam Emails

AALAS housing for the National Meeting will open in July 2021.



Please do not make hotel arrangements or share any personal information through any means other than through the AALAS National Meeting Housing Bureau. If you receive a call or email from anyone representing AALAS, please be warned that we do not reach out to you for hotel reservations. This is a deceptive practice and is not in any way affiliated with AALAS.

Housing information will be located [here](#). Bookmark this page.

AALAS Foundation National Meeting Events

Swing into Science

Do you want to be part of an exciting and creatively challenging contest that is sure to be loads of fun and will also benefit the AALAS Foundation? The monkey has played an important role in COVID-19 research – that's why, this year, the AALAS Foundation has designed a "Swing Into Science" contest and we are challenging contestants to paint/decorate a wooden 10" monkey– the official wooden monkey and display stand will be shipped to contestants upon registration and payment of entry fee. Learn more [here](#).



P +1 512 2438539
M +1 512 5895431
Skype pat.guidier1
pguider@a-tune.com
www.a-tune.com

a-tune software INC.
19621 FM 1431, Suite 402
Jonestown, TX 78645
USA

Regulatory Compliant software for IACUC, IRB, IBC and Facility Management
J. Patrick Guider Jr., BA, MPA
General Manager

a-tune
make IT simple



Welcome to the Ask Me Anything Community!

We are excited to announce a new community initiative – Ask Me Anything sessions! An AMA is an interactive post where someone will answer your questions in real time. All AALAS members were automatically added to the Ask Me Anything community, which is where we will host future AMA sessions. Feel free to jump in and get the conversation started. You will have the ability to post questions anonymously as well.

Our first Ask Me Anything (AMA) will take place next week beginning on Monday, May 10. The topic of this AMA is abstract submission for the AALAS National Meeting. This is your chance to ask John Farrar, AALAS Director of Communications & Business Development, any questions about abstract submission. It's a great opportunity to learn more about submitting abstracts, right in time for the June 1 abstract submission deadline!

Next week's Ask Me Anything will open on Monday, May 10 and close on Saturday, May 8. Here is the link to the discussion: [AMA - Abstract Submission](#). If you have any questions you think of between now and the start of the event, please feel free to submit those, and John will have an answer ready for you once the AMA begins.

We are excited about the chance to interact with our members. We hope to “see” you there!


charles river | every step
of the way.

RICK DAVIS
Account Manager

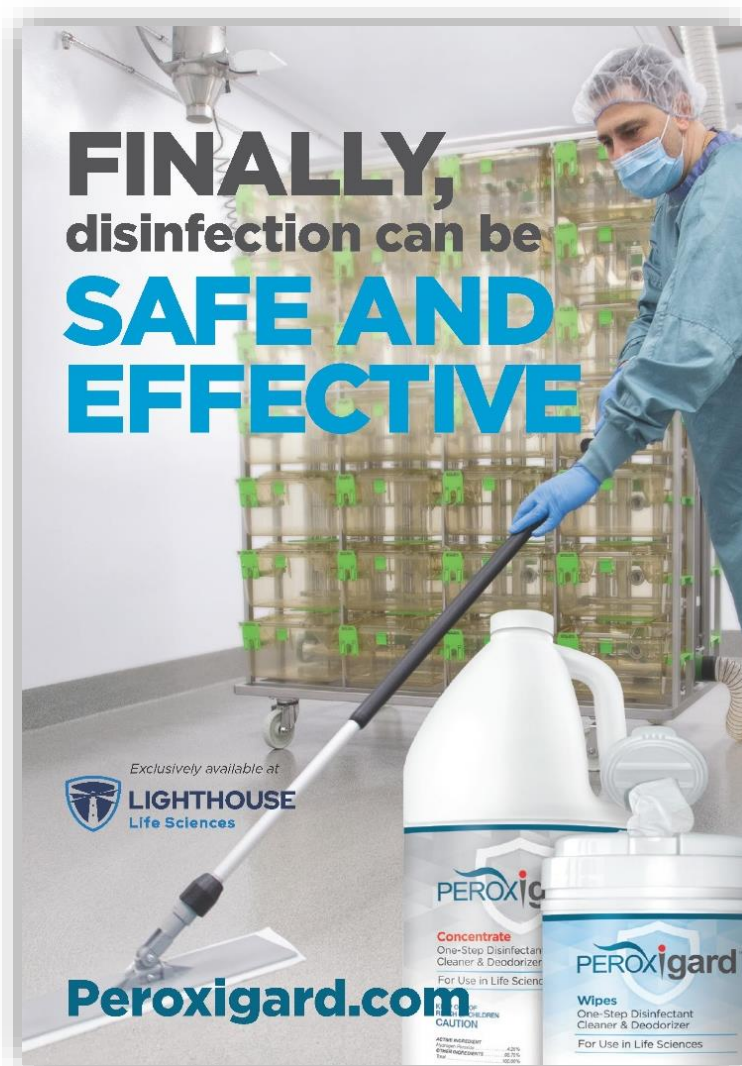
251 Ballardvale Street, Wilmington, MA 01887
Direct: 781.262.7090 • Mobile: 603.978.4445
Richard.Davis@crl.com • www.criver.com



Quip Laboratories
Biosafety & Facility Hygiene
Cage Washing Products • Disinfectants
Environmental Monitoring & Other Services

Timothy McHugh Biosafety Account Manager

Phone: 302.299.9758 Web: www.quiplabs.com
Email: tmchugh@quiplabs.com



FINALLY,
disinfection can be
SAFE AND
EFFECTIVE

Exclusively available at
LIGHTHOUSE
Life Sciences

Peroxigard.com

PEROXIGARD
Concentrate
One-Step Disinfectant
Cleaner & Deodorizer
For Use in Life Sciences

PEROXIGARD
Wipes
One-Step Disinfectant
Cleaner & Deodorizer
For Use in Life Sciences



June's AMP Anniversary Highlight: A New Approach to Advocacy, From the Inside Out



Former Michael D. Hayre Fellow Tom Holder meets with high school students in Seattle while visiting the University of Washington

Throughout 2021, Americans for Medical Progress is celebrating three decades of advocating for biomedical research. Back in 1991, we embarked on a mission to inform the public about the critical role of animal research in advancing medical progress. This year, as we recognize our 30th anniversary, we're sharing some of AMP's most memorable milestones each month.

This Month's Highlight: AMP's Michael D. Hayre Fellowship Program

AMP directly advocates for animal-based health research on a daily basis. But we also actively support others who share our deep commitment to this cause because it benefits humans and animals alike. The Michael D. Hayre Fellowship in Public Outreach fosters these additional grassroots efforts by supporting young professionals and students as they create innovative outreach initiatives that educate peers and the public about the important role of animals in research.



Michael D. Hayre
1952 - 2001

The fellowship was founded in the memory of Michael D. Hayre, AMP's former Chairman. Dr. Hayre was a dedicated and gifted research advocate and communicator, specifically in relation to laboratory animals. After obtaining his Doctor of Veterinary Medicine degree from Tuskegee University in 1978, he became a veterinarian in the army. He later went on to hold several prestigious positions, gaining respect throughout the research world and beyond. Dr. Hayre was well known for encouraging and inspiring those around him to constantly explore and strive for their goals.

He placed a special emphasis on the capabilities of young adults in the initial stages of their careers. When he tragically died in a car accident at only 49 years of age, AMP decided to honor Dr. Hayre and all he offered by creating the Michael D. Hayre Fellowship for young professionals.

This fellowship aims to continue Dr. Hayre's service to medicine and research by promoting peer education about animal research among fellow students, fueled by a \$5,000 stipend plus support for expenses. Social science research has demonstrated how information is more easily spread among like-minded individuals. Peer education optimizes these efforts.

Tom Holder was the inaugural Hayre Fellow in 2008. After graduating from Oxford University, Tom played a pivotal role in the launch of Pro-Test, a U.K.-based initiative which inspired students, scientists and members of the public to stand up in support of biomedical research and critical animal studies. This activism came in response to a rise in violence and intimidation by animal rights extremists in that country at the time. The Hayre Fellowship, along with assistance from Pro-Test allowed Tom to travel to the United States where he founded Speaking of Research. The organization still exists today and serves as a highly respected, independent research advocacy organization led by scientists, science communicators and other members of the research community.



Tom Holder speaks at a Pro-Test event

Biomedical Research Awareness Day is another Hayre Fellowship success story. While receiving veterinary training, Dr. Logan France created the popular advocacy initiative. Subsequent Hayre fellows teamed up with Logan and built upon that groundwork, fueling the massive expansion we have seen over the past few years. In 2019, over 200 sites worldwide hosted BRAD events. And while the pandemic significantly impacted BRAD in 2020, more than 700 people signed up to take part in the program's online webinar.



Side note: Due to COVID-19, this year's BRAD celebration will take place in the fall. Registration remains open. **[Just click this link to sign up.](#)**



**ANIMAL
HOUSING**

**WASHING &
STERILIZATION**

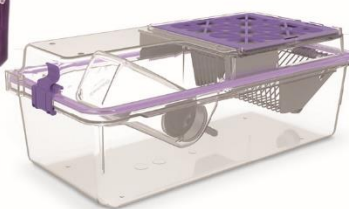
**WORK
STATIONS**

**VIVARIUM
SOLUTIONS**

**COLONY
HEALTH
MONITORING**

SolutionsProvider

Over the past 50 years our goal has been to serve science with integrity and care. With the expansion of our solutions for the laboratory animal science community we can offer more support, and more choices, to help you in your quest to improve lives around the world through scientific discovery.



LEARN MORE AT WWW.ALLENTOWNINC.COM

WWW.ALLENTOWNINC.COM



**For All Your
SWINE CARE
Needs**

**Our NEW Transport Cart
with Lift Top**



#OETCL6



sales@ottoenvironmental.com

414.529.7780

Iowa Branch AALAS
January 29, 2021 Meeting Minutes
Board Meeting – Zoom Meeting

Called to order by 2020 Branch President, Brianne Ball at 11:41pm.

Roll Call:

Member	Present	Absent
Emily Kaalberg – <i>President</i>	x	
Brianne Ball – <i>Past President</i>	x	
Becky Klimesh – <i>President Elect / Newsletter</i>	x	
Dallas Huddleson – <i>Treasurer / Membership</i>	x	
Shannon Schrader – <i>Secretary</i>	x	
Rebecka Morrison – <i>TBR</i>	x	
Mary Saur – <i>Board Member</i>	x	
Mary Haun – <i>Board Member</i>		x
Maria Martino-Cardona – <i>Board Member</i>	x	
Amanda Ahrens Kress – <i>Board Member</i>	x	
VACANT - <i>Nominations</i>	-	-
Jeff Crutcher – <i>PR Chair</i>	x	
Emily Petersen – <i>Awards Chair</i>		x
VACANT - <i>Elections</i>		x
Dean Isaacson – <i>Financial Review</i>	x	
VACANT – <i>Program Chair</i>	-	-

Meeting Minutes:

The new board members were introduced, and the meeting was turned over to the 2021 Present, Emily Kaalberg.

Minutes of December 2020 meeting were reviewed and approved. Moved by Emily Kaalberg and seconded by Maria Martino-Cardona.

Office Reports:

- Treasurer's Report – Dallas Huddleson
 - Approval of the Treasurer's report was moved by Brianne Ball and seconded by Becky Klimesh.

Greater Iowa Credit Union		Activity				
	Balance as of 07 DEC 20	Debits	Deposits	Balance as of 07 DEC 20	Interest Rate	Maturity Date
Greater Blue Checking Account	\$944.94	\$141.99	\$50.00	\$852.92		
Business Share (Credit Card)	\$379.24	\$0.00	\$0.02	\$379.26		
Business Share Certificate 229621	\$6,060.19	\$0.00	\$5.39	\$6,065.58	1.05%	19-Dec-22
Business Share Certificate 229622	\$5,097.05	\$0.00	\$9.41	\$5,106.46	2.18%	13-Jan-22
Business Share Certificate 229624	\$5,207.62	\$0.00	\$9.62	\$5,217.24	2.18%	20-Jan-22
	\$17,689.04	\$141.99	\$74.44	\$17,621.46		

- TBR Report – Rebecka Morrison
 - No report

Iowa Branch AALAS – January 29, 2021 Meeting Minutes, Continued

Committee Chair Reports:

- Membership – Dallas Huddleson
 - Membership is down from 2019
 - One gold member vendor
 - 2 vendors willing to sponsor LAT and Ronald E. Flatt award at fall meeting

		2021	2020	2019	2018	2017
Total Branch Members		36	133	146	163	83
Membership Renewals		31	83	113	87	63
	Individual	21	72	N/A	N/A	N/A
	Vendor	10	11	N/A	N/A	N/A
New Members		1	45	28	72	16
	Individual	1	44	N/A	N/A	N/A
	Vendor	0	0	N/A	N/A	N/A
Lifetime Members		4	4	4	4	4
Student		0	3	1	3	0
	New	0	2	N/A	N/A	N/A
	Renewal	0	1	N/A	N/A	N/A
Individuals taking advantage of Group Membership		N/A	85	92	54	0
National Members		9	61	138	80	N/A

- Newsletter – Becky Klimesh
 - Next newsletter will be in March. Have submissions to Becky by March 1st.
- Public Relations – Jeff Crutcher
 - No Report
- Social Media – Emily Kaalberg
 - Emily will update with new board members
- Nominations – VACANT
 - Voting is currently open
- Elections – Brianne Ball volunteered to fill this position
 - No Report
- Awards – Emily Petersen
 - No Report
- Financial Review – Dean Isaacson
 - Dallas will provide Dean with 2020 books
- Program Chair – Mary Sauer volunteered to fill this position
 - Planning will begin on a program for 2021, both in person and virtual will be evaluated.

Old Business

- Dallas has submitted membership roster to National AALAS
- Updating Treasurer position
 - Dallas found a cloud-based accounting program (monthly fee)
 - Program to load on a laptop (\$300-\$400)
 - dedicate a laptop to the treasurer (~\$600)
 - Continue to discuss and decide on a path forward / wait to see who replaces Dallas for the treasurer position

New Business

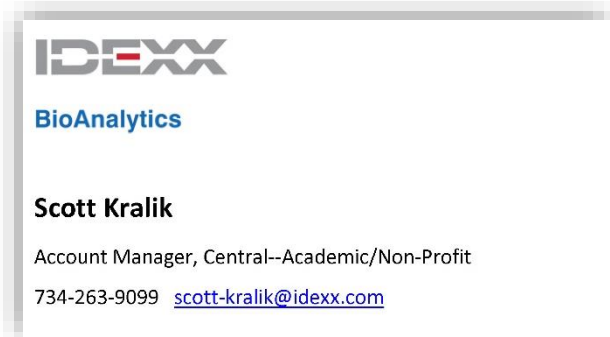
- Tech week activities
 - U of I has modified their activities
 - Iowa State is still handing out small treats without the gathering
- Philanthropy projects
 - Grant to attend National Meeting
 - Work through the process of creating a description for sponsoring a candidate to attend National Meeting. Moved by Becky Klimesh and seconded by Mary Sauer.
 - Candidates would need to submit a nomination form and referral letter.

Iowa Branch AALAS – January 29, 2021 Meeting Minutes, Continued

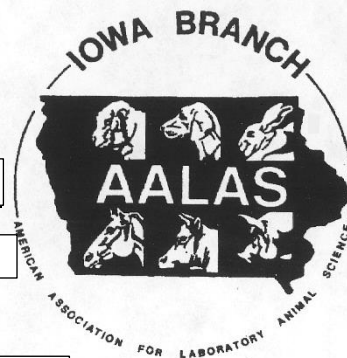
- Fall Meeting – Ames/Altoona
 - September 17th? Jeff and Deb Hansen center in Ames?
 - To do's
 - Reach out to vendors for sponsorships
 - Figure out speakers
 - If we need to go virtual – ask National for tips or documents to use
- Dallas or Emily to talk with Tecniplast to see if he had interest in being the vendor representative for the branch.

Meeting was adjourned at 12:20pm. Moved by Dallas Huddleson and seconded by Emily Kaalberg.

Respectfully submitted,
Shannon Schrader
2020 Secretary



Iowa Branch-American Association For Laboratory Animal Science, Inc. 2021 Membership Application



☐ New ☐ Renewal ☐ Full-time Student Group

Name
First M.I. Last

☐ Check if your information has not changed

Address
Street City State Zip Code

Email Phone
Employer/Institution Position

Full-time Student Projected Year of Graduation

National AALAS Member Number AALAS Certification Level

Areas of Interest

☐ Lab Animals ☐ Companion Animals ☐ Agricultural Animals ☐ Animal Production
☐ Research ☐ Vaccine Production ☐ Animal Husbandry Products ☐ Other:

Which Committee would you be interested in participating on?

☐ Awards ☐ Elections ☐ Financial Review ☐ Membership ☐ Newsletter
☐ Nominations ☐ Program ☐ Public Relations ☐ Social Media ☐ Technical Branch

Applicant's Signature:

Type your full name if submitting via email

Annual Membership dues Iowa Branch AALAS, Inc. = FREE, 2020 dues are being rolled over into 2021.

Membership is FREE to New Members

If you are a full-time student, your membership is FREE. Please provide the year you plan to graduate.

Company (Group) Membership:

6-10 members: \$120.00 11-20 members: \$240.00
21-60 members: \$480.00 61-80 members: \$720.00
81-100+ members: \$960.00

Membership for 2021 is due by April 30, 2021

If you wish to pay by credit card, please go to www.paypal.com and send the money to iowaaalas@gmail.com.

Payment Form: ☐ Check ☐ PayPal ☐ Cash

Return the Form and Payment to:

Dallas Huddleson
Elanco Animal Health
800 Fifth Street NW
Fort Dodge, IA 50501

huddleson_dallas_w@elanco.com

"AALAS is dedicated to advancing and disseminating knowledge about the responsible care and use of laboratory animals for the benefit of human and animal health."

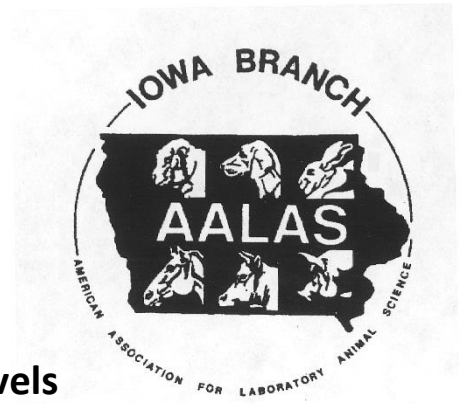
We would like to invite all who support this mission to join the Iowa Branch.

Treasurer's Use Only: Date Application Received/Entered: _____

Date Dues Paid: _____

Iowa Branch-American Association For Laboratory Animal Science, Inc. 2021 Vendor Membership Application

The Iowa Branch of AALAS BOD has decided to roll over the dues paid in 2020 into 2021. Advertisement rates still apply. Vendors are encouraged to support the Branch Fall meeting and awards.



Membership, Newsletter and Website Advertising Levels

Bronze Level: one membership in the Iowa Branch, business card advertisement in the newsletter and a link to the vendor's website in the Iowa Branch webpage - **\$35.00**

Silver Level: one membership in the Iowa Branch, business card advertisement in the newsletter, quarter page ad in the newsletter and a link to the vendor's website in the Iowa Branch webpage - **\$75.00**

Gold Level: 1-5 memberships in the Iowa Branch, business card advertisement in the newsletter, half page ad in the newsletter and a link to the vendor's website in the Iowa Branch webpage - **\$220.00**

Platinum Level: 6 or more memberships in the Iowa Branch, business card advertisement in the newsletter, full page ad in the newsletter and a link to the vendor's website in the Iowa Branch webpage - **\$300.00**

Added Bonus: All advertisers will receive recognition in the Fall Meeting Program

Additional advertising is available:

☐ Business Card Ad: \$25.00

☐ Quarter Page Ad: \$40.00

☐ Half Page Ad: \$70.00

☐ Full Page Ad: \$100.00

Website Ad: Free with the purchase of any of the above

Please send the advertisement electronically as an image file, such as a jpeg to becky.klimesh@zoetis.com. If an electronic version is not available, please contact Becky for more options.

Fall Meeting Sponsorship Levels

All proceeds go towards meals or other meeting expenses

☐ Platinum: \$1000.00 or More

☐ Gold: \$500.00 to \$999.00

☐ Silver: \$250.00 to \$499.00

☐ Bronze: \$50.00 to \$249.00

AALAS Certification Branch Awards Sponsorship Levels

Your company will be featured at the Fall Meeting as the award sponsor

☐ Assistant Laboratory Animal Technician: \$25.00

☐ Laboratory Animal Technician: \$50.00

☐ Laboratory Animal Technologist: \$75.00

☐ Dr. Ronald Flatt Memorial: \$100.00

2021 Vendor Membership Application – Page 2

Membership Level

☐Bronze ☐Silver ☐Gold ☐Platinum

Name of Company

Address

<input type="text"/>	<input type="text"/>	<input type="text"/>	<input type="text"/>
Street	City	State	Zip Code

Individual's Name	Email	Phone	Position	AALAS Member Number

Areas of Business

<input type="checkbox"/> Housing	<input type="checkbox"/> Husbandry	<input type="checkbox"/> Animal Models	<input type="checkbox"/> Biosafety
<input type="checkbox"/> Consultants	<input type="checkbox"/> Contract Research Services	<input type="checkbox"/> Educational Resources	<input type="checkbox"/> Facility Design
<input type="checkbox"/> Sampling	<input type="checkbox"/> Laboratory Supplies	<input type="checkbox"/> Surgical Supplies	<input type="checkbox"/> Sanitation
<input type="checkbox"/> Transportation	<input type="checkbox"/> Veterinary Equipment	<input type="checkbox"/> Computers/Software	<input type="checkbox"/> Chemicals

Which Committee would you be interested in participating on?

<input type="checkbox"/> Awards	<input type="checkbox"/> Elections	<input type="checkbox"/> Financial Review	<input type="checkbox"/> Membership	<input type="checkbox"/> Newsletter
<input type="checkbox"/> Nominations	<input type="checkbox"/> Program	<input type="checkbox"/> Public Relations	<input type="checkbox"/> Social Media	<input type="checkbox"/> Technical Branch

Applicant's Signature:

Type your full name if submitting via email

Membership for 2021 is due by **April 30, 2021**

If you wish to pay by credit card, please go to www.paypal.com and send the money to iowaaalas@gmail.com.

Payment Form: ☐Check ☐PayPal ☐Cash

Return the Form and Payment to:

Dallas Huddleson
Elanco Animal Health
800 Fifth Street NW
Fort Dodge, IA 50501
huddleson_dallas_w@elanco.com

"AALAS is dedicated to advancing and disseminating knowledge about the responsible care and use of laboratory animals for the benefit of human and animal health."

We would like to invite all who support this mission to join the Iowa Branch.

Sponsorship Rates for 2021

Full Page \$100

Half Page \$ 70

Quarter Page \$ 40

Business Card \$ 25

For other Sponsorship Options and Opportunities, see the vendor application on the previous page.

Website Ad: Free with the purchase of any newsletter ad purchase

Membership \$ 45
Free in 2021, see membership application above.

New Members receive Free Membership

NEWSLETTER INFORMATION...

Deadline for the next issue of this newsletter is September 1, 2021

Send to:
Becky Klimesh
Zoetis, Inc.
2000 Rockford Road
Charles City, IA 50616
becky.klimesh@zoetis.com

Articles or interesting information is always welcome from any member. Please feel free to forward to me. Thanks.



Thanks to our Sponsors

Allentown Caging

Lighthouse Life Sciences

a-tune Software, Inc.

Validated Delivery Solutions

TOPAZ Technologies

Shepherd Specialty Papers

Avidity Science

Sanitation Strategies

IDEXX BioResearch

Charles River

Envigo

Ancare Corp.

Otto Environmental

Tecniplast USA

Purina LabDiet

Quip Labs



Iowa AALAS Branch Awards Nomination Form

General Criteria for nominee:

1. All nominees must have conducted himself/herself in an exemplary manner in his/her work and be well thought of by fellow workers, supervisors, and investigators.
2. All nominees must be nominated by two current members of the Iowa Branch AALAS. A letter of nomination (from Nominator #1) should include all of the nominee's qualifications and reason for the recommendation.
3. Nominations will remain eligible for two years following the original date of submission.
4. Membership in the Iowa or National AALAS is desirable, but not required.

Please email completed forms and letters of support to: emily-petersen@uiowa.edu

Or mail to:

Emily Petersen

2292 Old Farmstead Road

Coralville, IA, 52241

Assistant Laboratory Animal Technician (ALAT)

Criteria:

1. Nominee must be an Animal Technician and should not be in a management position
2. Nominee must be eligible for certification at the Assistant Laboratory Animal Technician level
3. Total amount of continuous full-time employment in a laboratory animal facility offering experience in animal care and use must be at least 1 year
4. Nominee must have demonstrated an interest and ability in the care of and concern for laboratory animals above and beyond the average technician.

Name of Nominee and business address: _____

Level of Certification by AALAS: _____

Work Experience (institution, location, dates of employment, supervisor's name):

Educational Background: _____

Continuing Education (include items such as webinars, AALAS Branch and Regional meetings, etc.): _____

Name of Nominator #1 (address, phone number, email address):

As the nominator, I do certify that the nomination given is correct and I AM ENCLOSING A LETTER explaining why I feel that this nominee is qualified under the above listed general criteria for this award and why he/she should be nominated.

DATE: _____

Name of Nominator #2 (address, phone number, email address):

As the nominator, I do certify that the nomination is correct. (A letter of support for the candidate may be included if desired, but is not required).

DATE: _____

Laboratory Animal Technician (LAT)

Criteria:

1. Nominee must be an Animal Technician
2. Nominee must be eligible for certification at the Laboratory Animal Technician level
3. Total amount of continuous full-time employment in a laboratory animal facility offering experience in animal care and use must be at least 3 years
4. Nominee must have demonstrated an interest and ability in the care of and concern for laboratory animals above and beyond the average technician.

Name of Nominee and business address: _____

Level of Certification by AALAS: _____

Work Experience (institution, location, dates of employment, supervisor's name):

Educational Background: _____

Continuing Education (include items such as webinars, AALAS Branch and Regional meetings, etc.): _____

Name of Nominator #1 (address, phone number, email address):

As the nominator, I do certify that the nomination given is correct and I AM ENCLOSING A LETTER explaining why I feel that this nominee is qualified under the above listed general criteria for this award and why he/she should be nominated.

DATE: _____

Name of Nominator #2 (address, phone number, email address):

As the nominator, I do certify that the nomination is correct. (A letter of support for the candidate may be included if desired, but is not required).

DATE: _____

Supervisor (LATG)

Criteria:

1. Nominee must hold a position of responsibility for the routine management of a laboratory animal facility.
2. Nominee must be eligible for certification at the Laboratory Animal Technologists Level
3. Total amount of continuous full-time employment in a laboratory animal facility offering experience in animal care and use must be at least 6 years

Name of Nominee and business address: _____

Level of Certification by AALAS: _____

Work Experience (institution, location, dates of employment, supervisor's name):

Educational Background: _____

Continuing Education (include items such as webinars, AALAS Branch and Regional meetings, etc.): _____

Name of Nominator #1 (address, phone number, email address):

As the nominator, I do certify that the nomination given is correct and I AM ENCLOSING A LETTER explaining why I feel that this nominee is qualified under the above listed general criteria for this award and why he/she should be nominated.

DATE: _____

Name of Nominator #2 (address, phone number, email address):

As the nominator, I do certify that the nomination is correct. (A letter of support for the candidate may be included if desired, but is not required).

DATE: _____

Veterinary Technician

Name of Nominee and business address: _____

Level of Certification by AALAS: _____

Work Experience (institution, location, dates of employment, supervisor's name):

Educational Background: _____

Continuing Education (include items such as webinars, AALAS Branch and Regional meetings, etc.): _____

Name of Nominator #1 (address, phone number, email address):

As the nominator, I do certify that the nomination given is correct and I AM ENCLOSING A LETTER explaining why I feel that this nominee is qualified under the above listed general criteria for this award and why he/she should be nominated.

DATE: _____

Name of Nominator #2 (address, phone number, email address):

As the nominator, I do certify that the nomination is correct. (A letter of support for the candidate may be included if desired, but is not required).

DATE: _____

Awards criteria for the Dr. Ronald E. Flatt Memorial Award

Dr. Ronald Flatt came to Iowa State University in 1970. He received his B.S., D.V.M. and Ph.D. degrees from the University of California at Davis. He spent two years at the Armed Forces Institute of Pathology, and was a faculty member at the University of Missouri before coming to Iowa State University as a faculty member in the Department of Pathology in the college of veterinary medicine. Dr. Flatt was board certified in Pathology and Laboratory Animal Medicine. He and Ron Moses laid the groundwork for Iowa State University's Laboratory Animal Resources and their animal care and use program.

Dr. Flatt was very active in both National AALAS and the Iowa Branch AALAS and was editor of Laboratory Animal Science for several years. His high standards of performance and his ability to work well with people enabled him to accomplish a great deal in the area of animal welfare. He was a person of high moral principles who truly lived his beliefs. He was a kind man with a good sense of humor and devoted to his family.

When Dr. Flatt died suddenly in January 1984, it was a great loss to laboratory animal science and a personal loss for all who knew him. The Ronald E. Flatt Memorial Award was created as an expression of the respect the Iowa Branch AALAS had for Dr. Flatt and the principles he embodied.

General Criteria for Awardee:

1. The nominee must be a member of the Iowa Branch AALAS, Inc., and have a minimum of 3 years experience in the laboratory animal field.
2. The nominee must have demonstrated exceptional ability to work well with colleagues, supervisors, and investigators; have demonstrated a sincere interest and concern for the comfort and welfare with which he/she works.
3. The nominee must have conducted himself/herself in an exemplary manner in his/her work and be well thought of by fellow workers, supervisors, and investigators.
4. Two members of the Iowa Branch AALAS, Inc must nominate the nominee. A letter of nomination should include all of the nominee's qualifications and reasons for the recommendations.

Send your nomination to:

Emily Petersen

University of Iowa

2292 Old Farmstead Road

Coralville, IA 52241

Or via email:

emily-petersen@uiowa.edu

Name of Nominee and business address: _____

Level of Certification by AALAS: _____

Work Experience (institution, location, dates of employment, supervisor's name): _____

Educational Background: _____

Continuing Education (include items such as webinars, AALAS Branch and Regional meetings, etc.):

Name of Nominator #1 (address, phone number, email address):

As the nominator, I do certify that the nomination given is correct and I AM ENCLOSING A LETTER explaining why I feel that this nominee is qualified under the above listed general criteria for this award and why he/she should be nominated.

DATE: _____

Name of Nominator #2 (address, phone number, email address):

As the nominator, I do certify that the nomination is correct. (A letter of support for the candidate may be included if desired, but is not required).

DATE: _____

Laboratory Animal Research Support (LARS) Individual

Criteria:

1. Nominee must have earned the LARS certification from AALAS
2. Nominee must work in a position that supports animal research programs, or be a new animal technician or student working in an animal research program and does not yet qualify for other AALAS certification.
3. Nominee must have demonstrated an interest in the care of and concern for laboratory animals as well as interest in the laboratory animal science and biomedical research field above and beyond the average technician/staff member.

Name of Nominee and business address: _____

Level of Certification by AALAS: _____

Work Experience (institution, location, dates of employment, supervisor's name):

Educational Background: _____

Continuing Education (include items such as webinars, AALAS Branch and Regional meetings, etc.): _____

Name of Nominator #1 (address, phone number, email address):

As the nominator, I do certify that the nomination given is correct and I AM ENCLOSING A LETTER explaining why I feel that this nominee is qualified under the above listed general criteria for this award and why he/she should be nominated.

DATE: _____

Name of Nominator #2 (address, phone number, email address):

As the nominator, I do certify that the nomination is correct. (A letter of support for the candidate may be included if desired but is not required).

DATE: _____